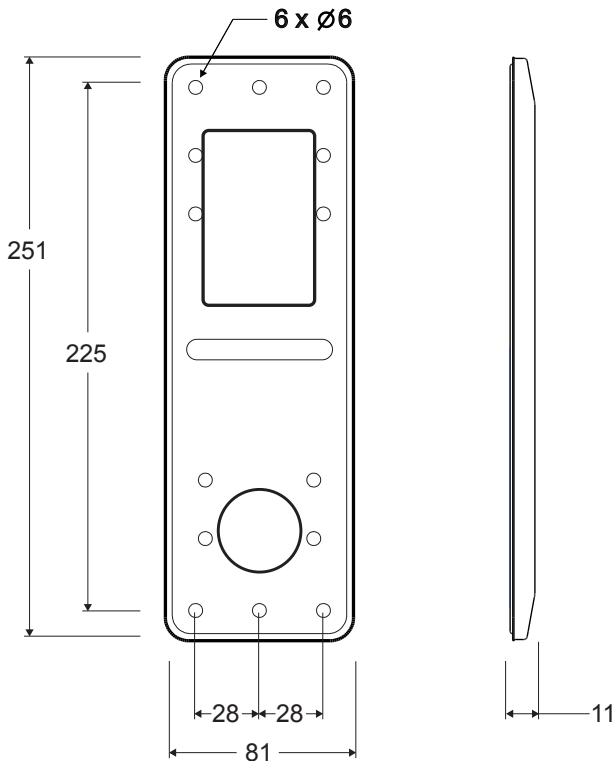


SafeLine **AX** (CANopen-Lift product)

MANUAL



Displays floor designations, arrows and scrolling messages.

Floor display



SafeLine **AX**

TECHNICAL DATA FOR CIRCUIT BOARD AX-IO-FD/AX-IO2-FD

Power:	18-28 VDC
Size (H x W x D):	AX-IO-FD Board: 55 x 48 x 12 mm AX-IO2-FD Board: 95 x 73 x 7 mm Full casting: 250 x 80 x 10 mm
Current consumption:	max. 110 mA, min. 40 mA at 24 VDC

INTRODUCTION

General information	4
Declaration of conformity	4
Safety precautions	4

OVERVIEW

Product variants	5
Removing the front plate	6

INSTALLATION

AX-FD4-W (CANopen)	7
AX-FD4-VW (CANopen)	8
AX-BUT-B1/B2	9
AX-IO-FD (CANopen)	10
AX-IO2-FD (CANopen)	11

GENERAL INFORMATION

This unit was built to state-of-the-art technology and to generally recognised safety related technical standards currently applicable. These installation instructions are to be followed by all people working with the unit, in both installation and maintenance.

It is extremely important that these installation instructions are made available at all times to the relevant technicians, engineers or servicing and maintenance personnel. The basis prerequisite for safe handling and trouble free operation of this system is a sound knowledge of the basic and special safety regulations concerning conveyor technology, and elevators in particular.

The unit may only be used for its intended purpose. Note in particular that, no unauthorised changes or additions may be made inside the unit or individual components.

Exclusion of liability

The manufacturer is not liable with respect to the buyer of this product or to third parties for damage, loss, costs or work incurred as a result of accidents, misuse of the product, incorrect installation or illegal changes, repairs or additions. Claims under warranty are likewise excluded in such cases. The technical data is the latest available. The manufacturer accepts no liability arising from printing errors, mistakes or changes.

DECLARATION OF CONFORMITY

Download "The declaration of conformity" at our website: www.safeline-group.com

SAFETY PRECAUTIONS!

- **Only trained professionals, who are authorised to work on the equipment, should install and configure this product.**
- This quality product has been designed and manufactured to be used for its specified purpose only.
- It should not be modified or altered in any way, and should only be installed and configured strictly following the procedures described in this manual.
- All applicable health and safety requirements and equipment standards should be considered and strictly adhered to when installing and configuring this product.
- After installation and configuration this product and the operation of the equipment should be fully tested to ensure correct operation before the equipment is returned to normal use.

Electrical and electronic products may contain materials, parts and units that can be dangerous for the environment and human health. Products marked with the WEEE mark (shown below), shall not be disposed together with your normal household waste. Please inform yourself about the local rules and disposal collection system for electrical and electronic products. The correct disposal of your old product will help to prevent negative consequences for the environment and human health.

(WEEE = Waste of Electrical & Electronic Equipment).

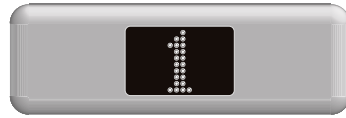


PRODUCT VARIANTS**AX-FD4-W (CANopen)**

AX-FD4-W (vertical)

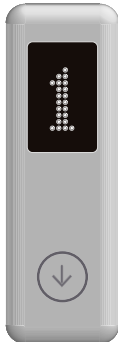


AX-FD4-W (horizontal)



AX-FD4-VW (CANopen)

AX-FD4-VW-B1



AX-FD4-VW-B2



AX-BUT

AX-BUT-B1

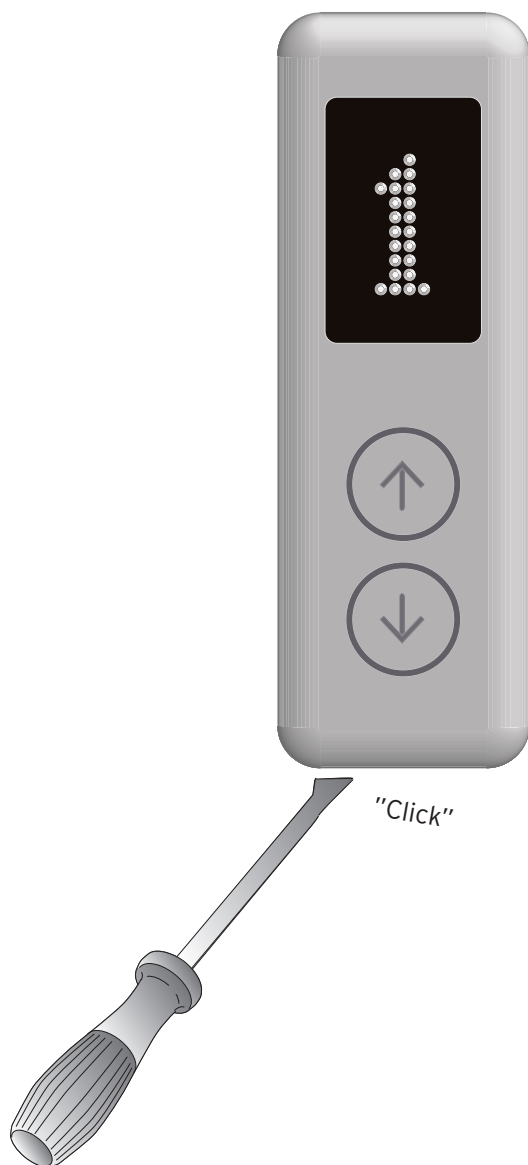


AX-BUT-B2



NOTE: I/O board not
included for AX-BUT

REMOVING THE FRONT PLATE

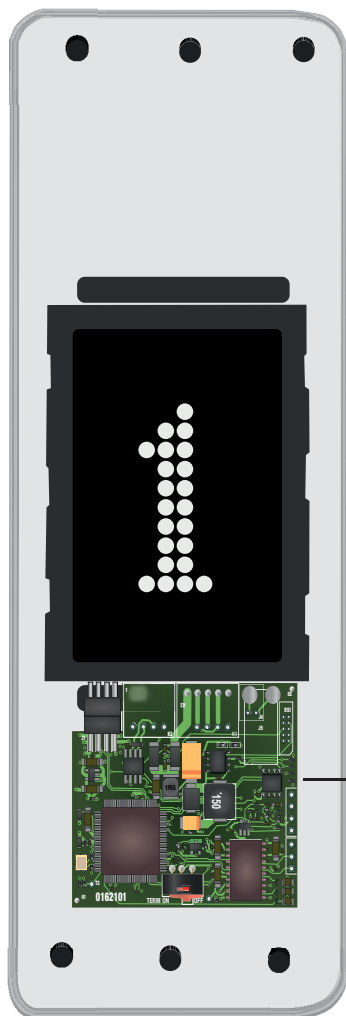


AX-FD4-W (CANopen)

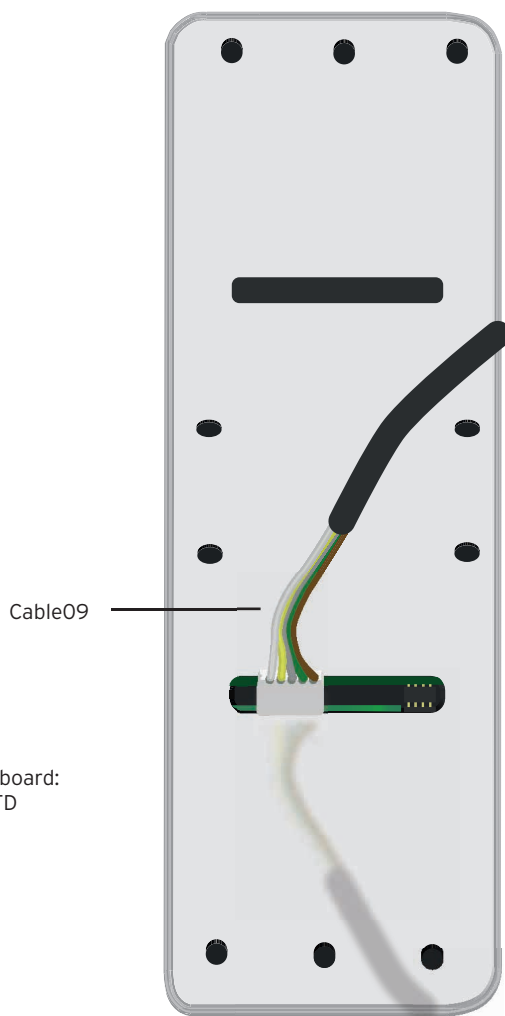
This product is delivered together with circuit board AX-IO-FD, which is a CANopen-Lift product.

Configuration:
General configuration is made with CAN-wizard.

Front (without front plate)



Back



Installation

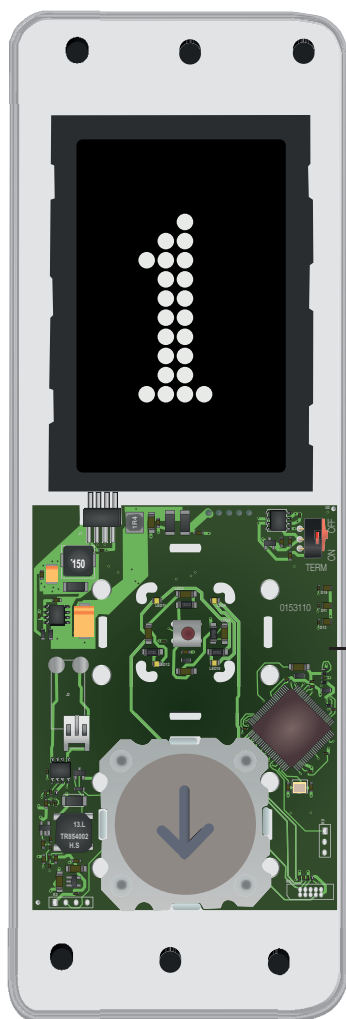
AX-FD4-VW (CANopen)

This product is delivered together with circuit board AX-IO2-FD, which is a CANopen-Lift product.

Configuration:

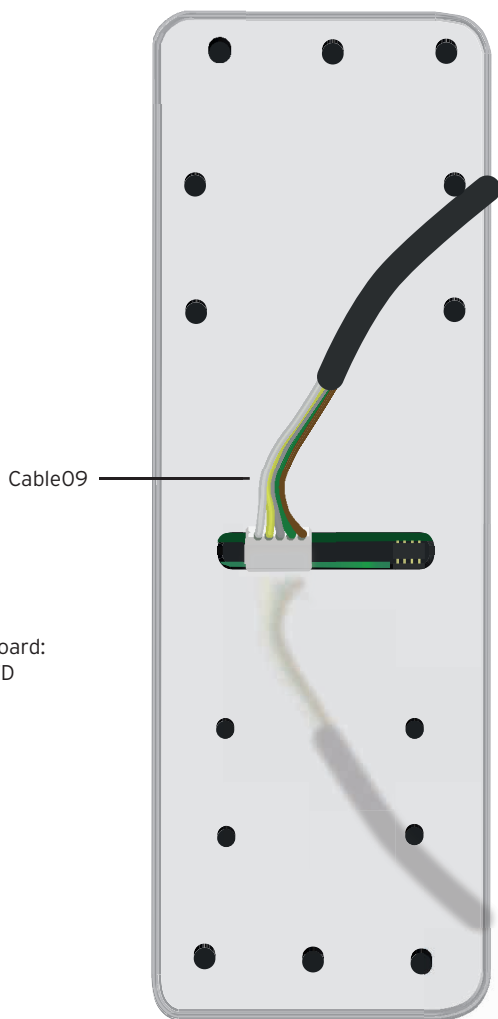
General configuration is made with CAN-wizard.

Front (without front plate)



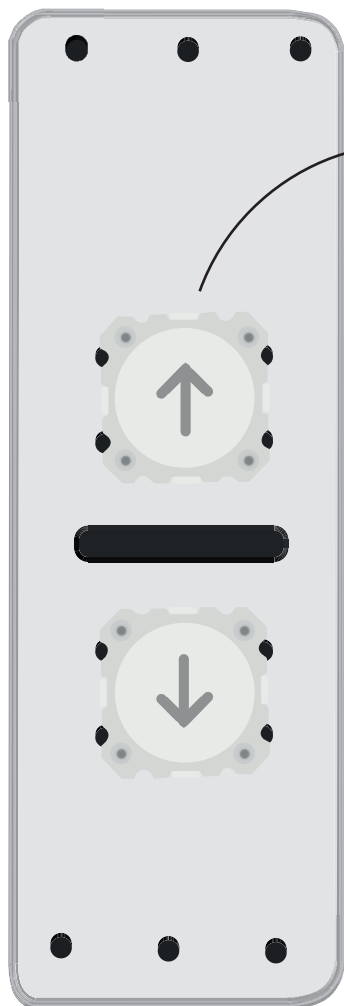
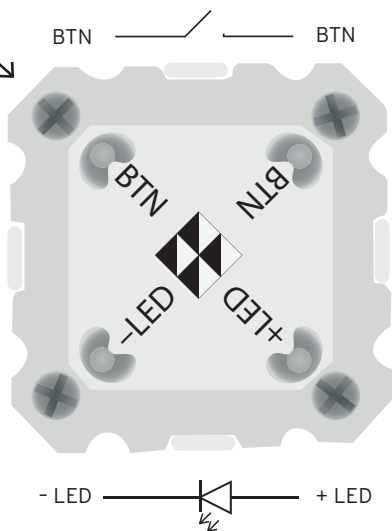
Circuit board:
AX-IO2-FD

Back



AX-BUT-B1/B2

Please note that this product does not come with an I/O board.

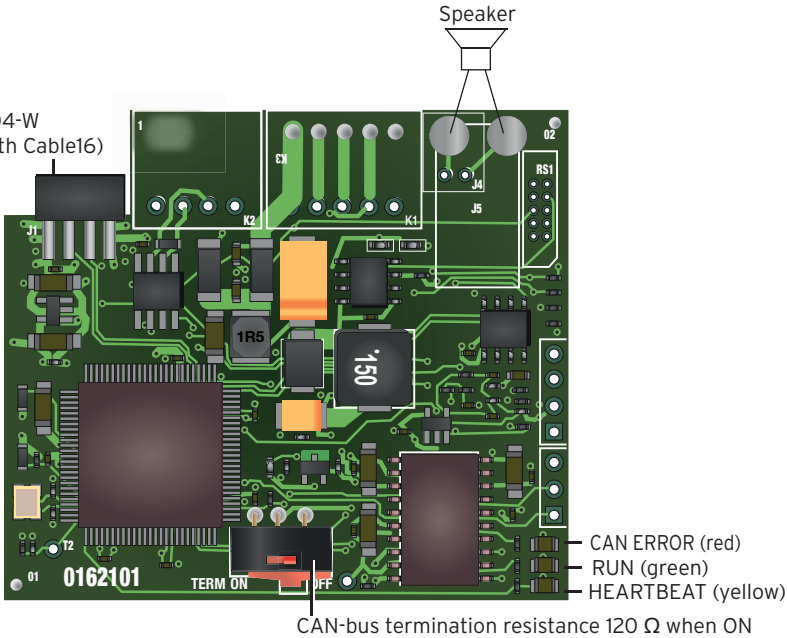
Front (without front plate)**Backside of the button**

AX-IO-FD (CANopen)

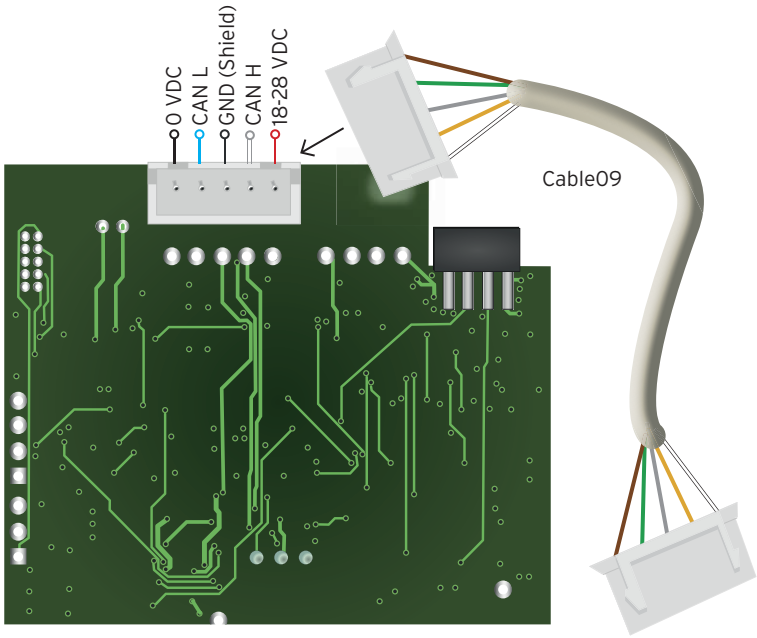
Circuit board AX-IO-FD is a CANopen-Lift product used with SafeLine AX-FD4-W.

Front

Connection to AX-FD4-W
(either directly or with Cable16)

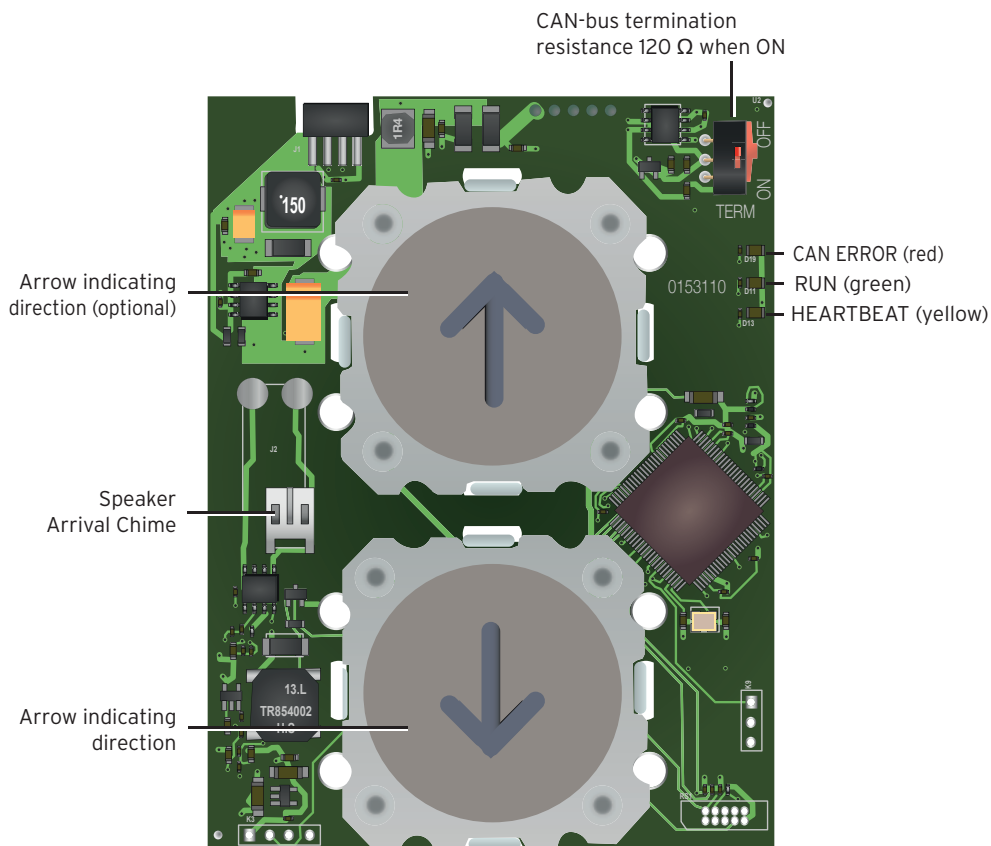


Back



AX-IO2-FD (CANopen)

Circuit board AX-IO2-FD is a CANopen-Lift product used with SafeLine AX-FD4-VW.



SafeLine Headquarters

Antennvägen 10 · 135 48 Tyresö · Sweden
Tel.: +46 (0)8 447 79 32 · info@safeline.se
Support: +46 (0)8 448 73 90

SafeLine Denmark

Erhvervsvej 19 · DK - 2600 Glostrup · Denmark
Tel.: +45 44 91 32 72 · info-dk@safeline.se
Support: +45 44 91 32 72

SafeLine Norway

Solbråveien 49 · 1383 Asker · Norway
Tel.: +47 94 14 14 49 · post@safeline.no
Support.: +47 94 14 14 49

SafeLine Europe

Interleuvenlaan 62 · 3001 Heverlee · Belgium
Tel.: +32 (0)16 39 48 66 · info@safeline.eu
Support: +32 (0)4 85 89 08 95

SafeLine-Deutschland

Westfalenstraße 22a · D-51688 Wipperfürth · Germany
Tel.: +49 (0) 2267 - 8 67 96 63 · info@safeline-deutschland.de
Support: +49 (0) 2267 - 8 67 97 97

SafeLine Elevator Parts UK

3 Evegate Park Barn · Station Road · Smeeth · Ashford · Kent · TN25 6SX · United Kingdom
Tel.: +44 (0)1303 813414 · info@safeline.uk.com
Support: +44 (0)1303 813 414

SafeLine - Your partner in lift safety