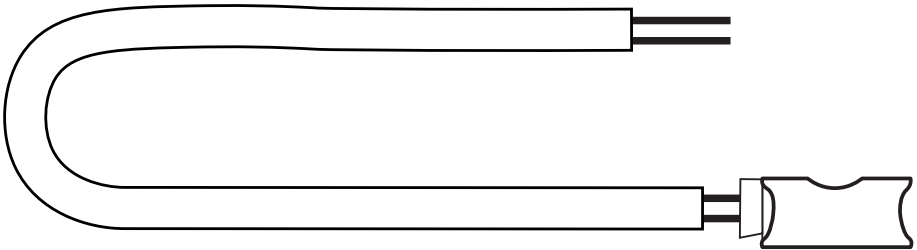

CABLE22 Manual

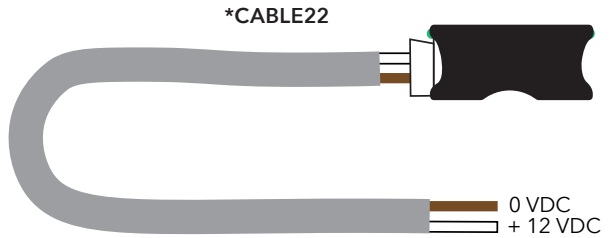


SafeLine MX3+ LED button cable

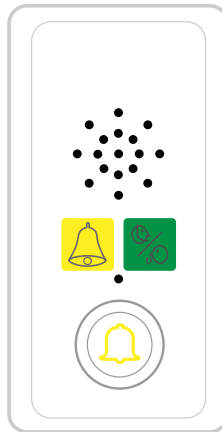
Adapter Cable for powering
the SafeLine MX3+'s light
button

Art.no.: *CABLE22

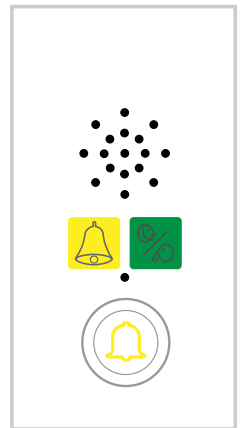
Cable used to power up the light button on the SafeLine MX3+ light
button variants (*SLMX3-SMD-PICB, *SLMX3-REC-PBL).
*CABLE22 is 2000 mm long.



*SLMX3-SMD-PICB



*SLMX3-REC-PBL

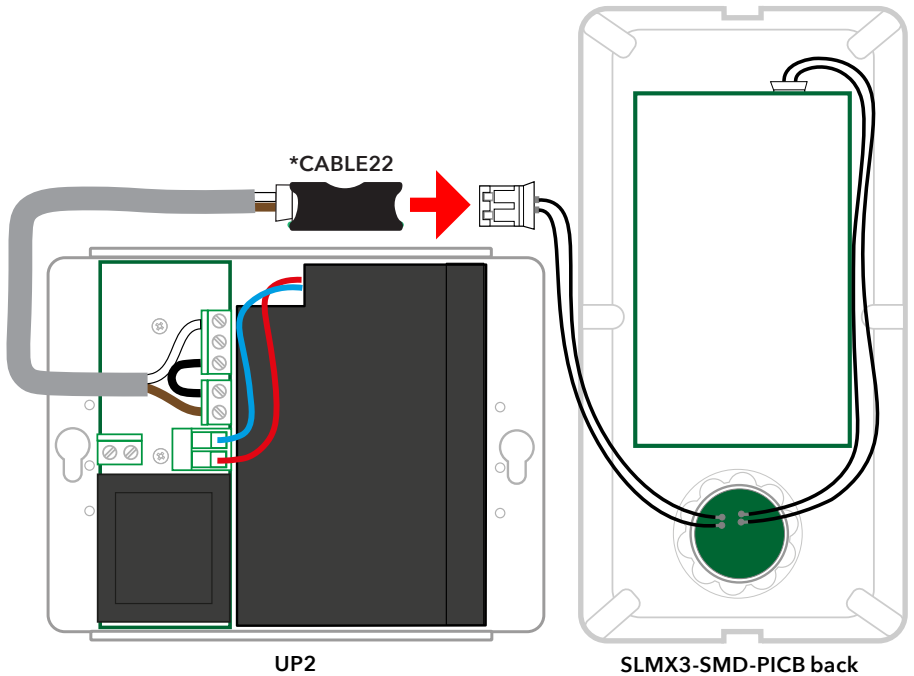


Wiring

Simply connect the cable to the SafeLine MX3+'s JST output in one end, then connect the other screw terminal end to the power source.

Example shown: CABLE22 connected to SLMX3-SMD-PICB and UP2

The cable is required in combination with the power sources UP2 or GL6 to power the light button.





SafeLine Headquarters

Antennvägen 10 · 135 48 Tyresö · Sweden
Tel.: +46 (0)8 447 79 32 · info@safeline.se
Support: +46 (0)8 448 73 90

SafeLine Denmark

Erhvervsvej 19 · 2600 Glostrup · Denmark
Tel.: +45 44 91 32 72 · info-dk@safeline.se

SafeLine Norway

Solbråveien 49 · 1383 Asker · Norway
Tel.: +47 94 14 14 49 · post@safeline.no

SafeLine Europe

Industrierrein 1-8 · 3290 Diest · Belgium
Tel.: +32 (0)13 664 662 · info@safeline.eu
Support: +32 (0)4 85 89 08 95

SafeLine Deutschland GmbH

Kurzwannstraße 3 · D-68526 Ladenburg · Germany
Tel.: +49 (0) 6203 840 60 03 · sld@safeline.eu

SafeLine Group UK

Unit 47 · Acorn Industrial Park · Crayford ·
Kent · DA1 4AL · United Kingdom
Tel.: +44 (0) 1322 52 13 96 · info@safeline-group.uk

SafeLine is a registered trademark of SafeLine Sweden AB. All other trademarks, service marks, registered trademarks, or registered service marks are the property of their respective owners.